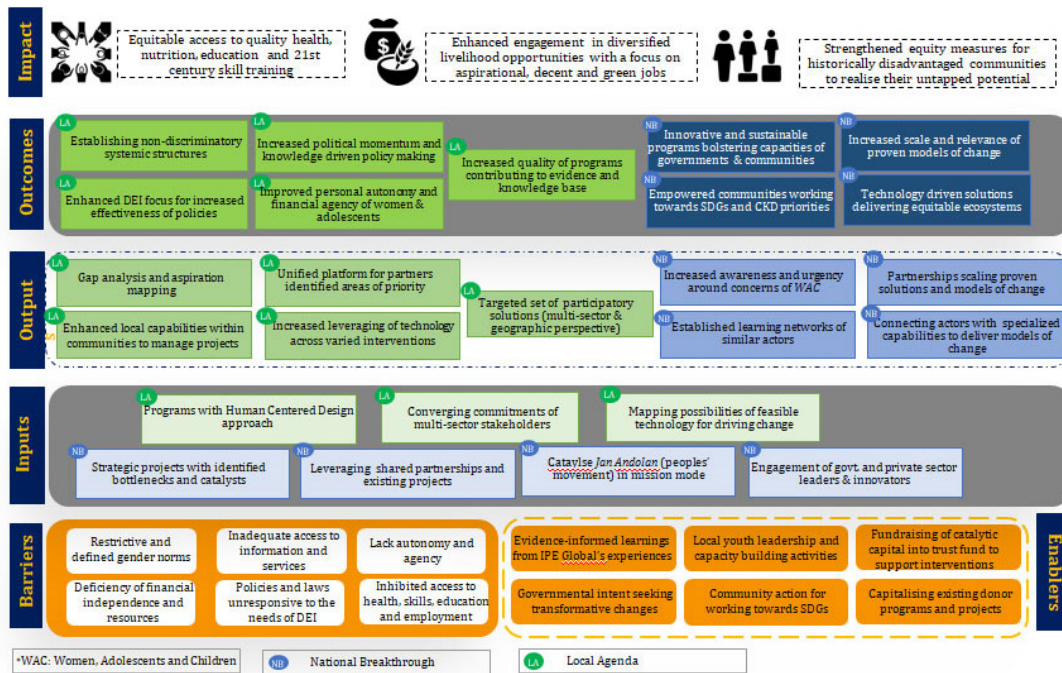


# Theory Of Change

IPE CKD is striving towards creating equitable access to quality health, nutrition, education and 21st century skill training; enhancing engagement in diversified livelihood opportunities with a focus on aspirational, decent and green jobs and strengthening equity measures for historically disadvantaged communities to realise their untapped potential.

Having an ambitious goal and a broad understanding of the development sector, we approach our work in a holistic way. IPE CKD has a women-based and rights-based approach, with a commitment to leave no one behind. We aim to stay relevant, effective and sustainable in a rapidly changing world and make strategic choices about the work we would do. We recognise the critical importance of assessing progress in all that we do.

With that in mind, Our Theory of Change guides us ensuring we continue to maximise our impact towards our vision.



We have undertaken path breaking initiatives in the space of gender equality and education. Our project Jigyasa is bridging knowledge and digital gap amongst the schools across 5 states and has impacted 2,14,000 students and 2250+ via modules/apps/games with customized-regional data. A gender audit report developed by IPE-CKD was released by the Comptroller and Auditor General of India (CAG); colloquiums have been organized by us that have subject matter experts from across the globe discussing gender issues. We have partnered with IDEA, Vodafone, prominent academic institutions such as IIT-Bombay, Shri Ram College of Commerce through innovative and scientifically designed research and interventions